

Safe use of social media

Introductions



Mathew Lea
Safeguarding Manager




E: safeandinclusive@lta.org.uk

T: 0208 487 7000

Instructions

Safe use of social media

Audio Connection ×

-  Call Me
The event will call you.
-  I Will Call In
-  Call Using Computer
[Change settings](#)

Close

Instructions

The screenshot shows a Zoom meeting window. At the top right, there are three icons: 'Participants', 'Chat', and 'Q&A'. The 'Chat' icon is circled in red. Below the Zoom window, there are two red text instructions: 'Click on the CHAT icon' and 'Then close the Q&A box'. The Zoom window also shows a 'Q&A' panel on the right with a dropdown menu set to 'All (0)'. At the bottom of the Zoom window, there is a text input field with a dropdown menu set to 'All Panelists' and a 'Send' button. The status bar at the bottom right of the Zoom window shows 'Connected' with a blue dot.

Participants Chat Q&A

Q&A

All (0)

Click on the CHAT icon

Then close the Q&A box

Ask: All Panelists

Send

Connected



What this webinar will cover

- The risks of social media
- Best practice through common scenarios
- How to use social media, while keeping yourself safe and maintaining professional boundaries
- What to do if you have a concern

What do you think children do online?

PLAY



CREATE



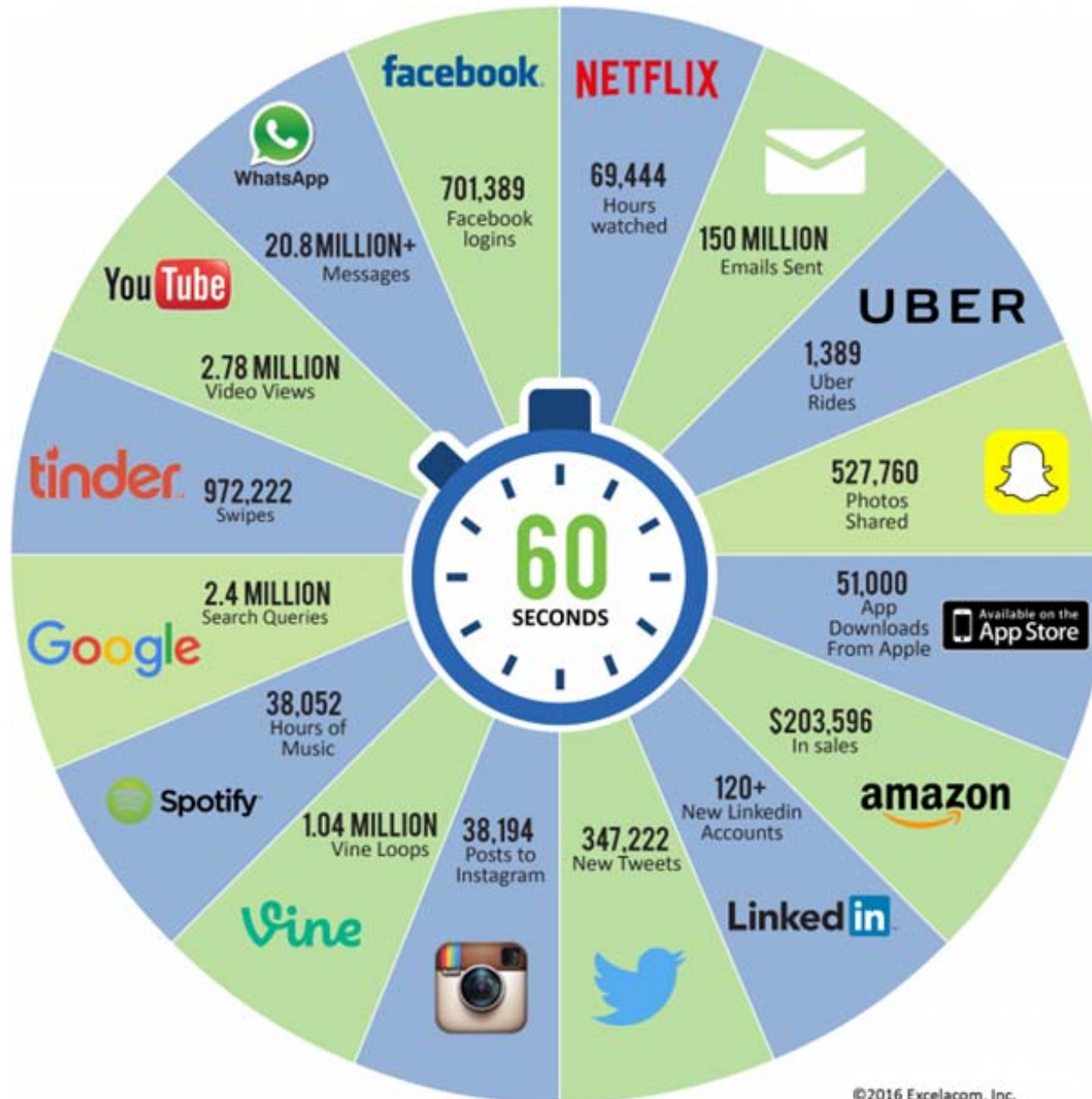
CONNECT



LEARN



What happens in 60 seconds



What risks do you think children face online?

- Inappropriate content (pornography, child abuse images, violence, self-harm, etc.)
- Cyberbullying
- Self-generated child sexual abuse images (nude selfies)
- Online grooming
- Using inappropriate/offensive language



Butterfly effect...

NEWS

[Home](#) | [UK](#) | [World](#) | [Business](#) | [Politics](#) | [Tech](#) | [Science](#) | [Health](#) | [Education](#) | [Entertainment](#)

[England](#) | [Regions](#)

Paris Brown: Kent youth PCC resigns after Twitter row

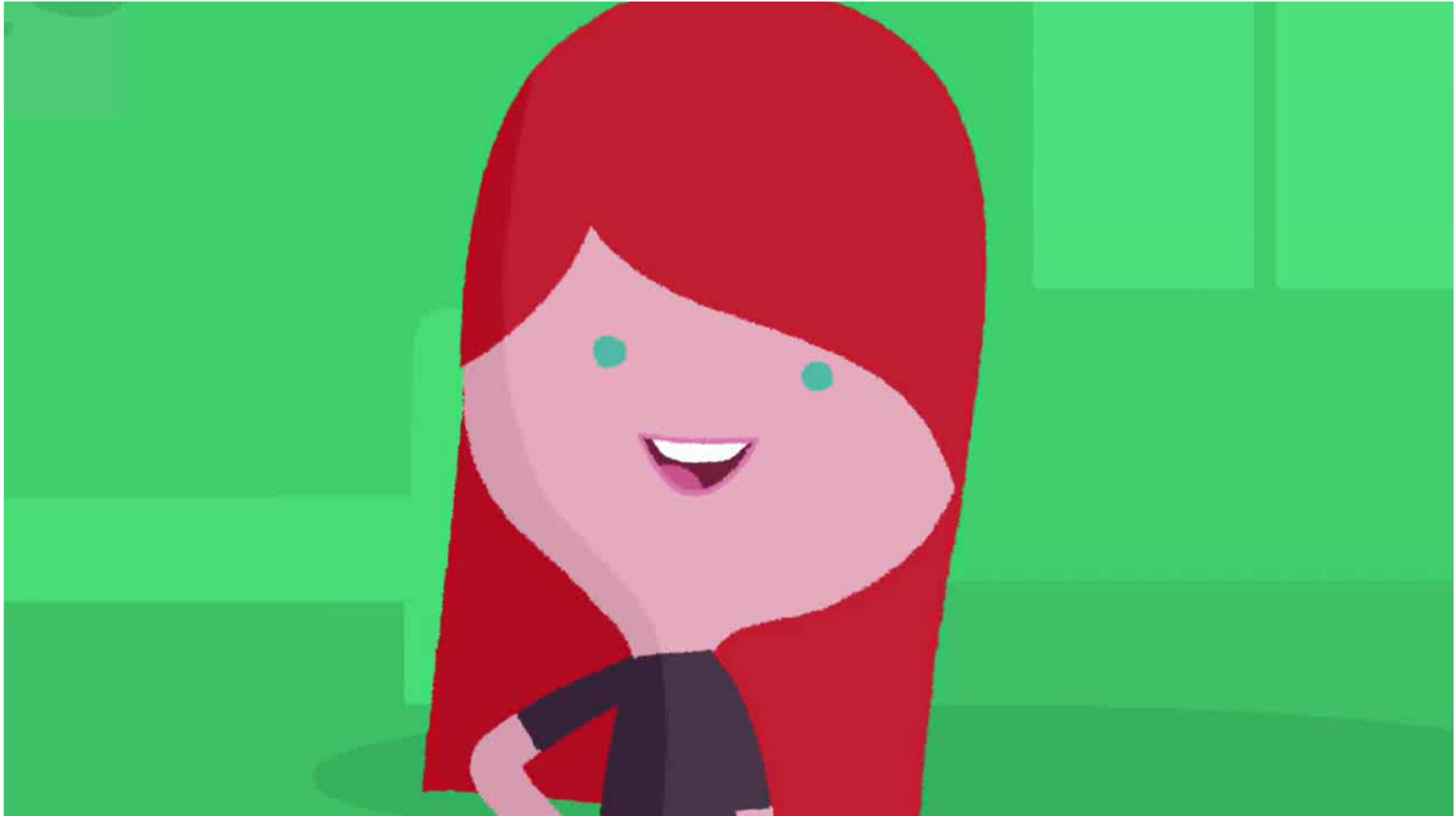
🕒 9 April 2013 | [England](#)

Resignation calls

The teenager was appointed last Wednesday to build a bridge between young people and policing in what was described as a "real hands-on role".

But The Mail on Sunday reported at the weekend Miss Brown had boasted about her sex life, drug-taking and drinking on her Twitter account @vilulabelle and had also posted violent, racist and anti-gay comments. The Twitter page has since been removed.

Social media risks



Video courtesy of NSPCC

What are the signs and indicators of online abuse?

Withdrawn or upset
after using the
internet

Suddenly behaves differently

Secretive

Has lots of new online
'friends'

Thoughts about suicide

Self-harms

Takes risks

Has a 'secret'
mobile phone

Aggressive

Depressed or anxious
after using the
internet

Changes in eating habits

Miss coaching sessions

Obsessive behaviour

What you can do to help keep children safe online

Let them know who they can talk to if they have a concern

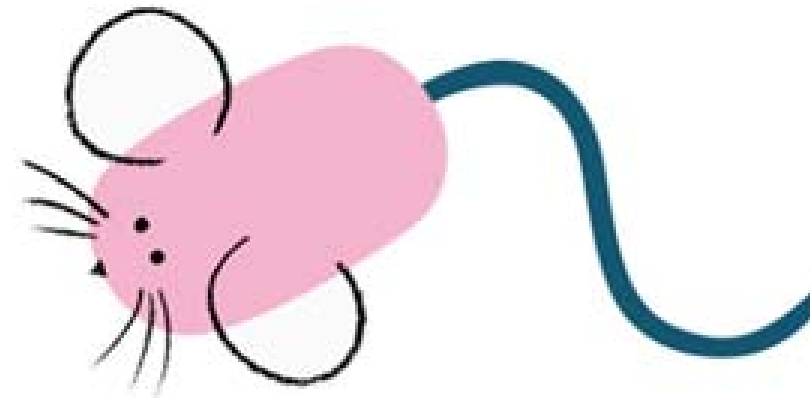
Know what to do if they do talk to you!

Role model appropriate behaviours

Respond to any concerns raised or spotted

Put measures in place at your venue to limit/control internet access

WELFARE
OFFICER



Scenarios

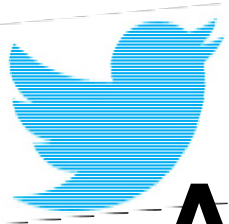
- **Is it okay?**
- **Are there any issues or risks?**
- **What would make it safe?**

Scenario 1

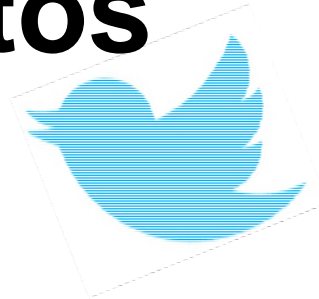
**One of the 16 year olds at your club
sends you a friend request on
Facebook**



Scenario 2



A parent posts some pictures on the club's social media page with the names of the children in the photos



Scenario 3

A 12 year old tells you that another junior member is bullying them online and on WhatsApp



What are the risks to adults?

Inappropriate behaviours

Digital footprints and reputation to your organisation

Blurring of boundaries



Online, offline



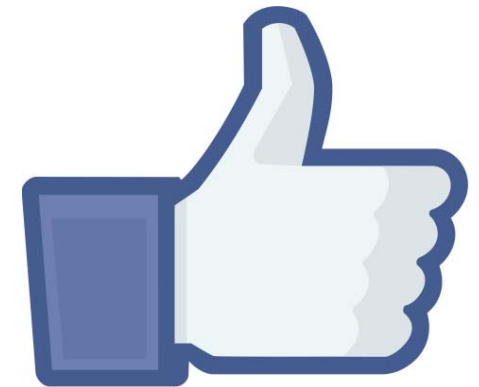
Making social media safer

When using social media (either as a club or a coach), you need to consider:

- Safe recruitment and selection for those managing your social media
- Best tool to use to present information
- The type of content to upload e.g. photos, discussion groups
- How you can ensure that communication takes place in an appropriate manner

Also...

- Link to codes of conduct
- Provide guidance on adult / child communication
- Acceptable Use and Social Media Policy
- Role model positive behaviours online (and offline)
- Clear reporting lines for concerns



What to do if you have a concern

If you have a concern about a young person's online activity, you can contact:

- LTA Safe and Inclusive Tennis Team: 0208 487 7000
- NSPCC: 0808 800 5000
- Police: 999 (emergency) / 101 (non-emergency)

To report illegal and criminal content:

- Internet Watch Foundation (IWF): <https://iwf.org.uk/>
- Child Exploitation and Online Protection (CEOP): <https://ceop.police.uk/safety>



Further support and reading

NSPCC

<https://www.nspcc.org.uk/share-aware>



<http://www.saferinternet.org.uk>



www.thinkuknow.co.uk

Thank you

Get in touch!
safeandinclusive@lta.org.uk
0208 487 7000