

Safe and Inclusive Tennis

Understanding the Grooming Process

Introductions



Mathew Lea
Safeguarding Manager




E: safeandinclusive@lta.org.uk

T: 0208 487 7000

Instructions

Safe use of social media

Audio Connection ×

-  Call Me
The event will call you.
-  I Will Call In
-  Call Using Computer
[Change settings](#)

Close



Instructions

The screenshot shows a Zoom meeting window. In the top right corner, the 'Participants' icon is on the left, the 'Chat' icon is circled in red, and the 'Q&A' icon is on the right. Below the chat icon, a 'Q&A' box is open, showing 'All (0)' and the text 'Click on the CHAT icon' and 'Then close the Q&A box'. At the bottom of the window, there is a text input field with a dropdown menu set to 'All Panelists' and a 'Send' button. The status bar at the bottom right shows 'Connected' with a blue dot.

Participants Chat Q&A

Q&A

All (0)

Click on the CHAT icon

Then close the Q&A box

Ask: All Panelists

Send

Connected



Problems during the webinar

1. Close the browser
2. Find the email with your joining instructions
3. Click on the link to join the webinar and you will re-join the session

What this webinar will cover

What is grooming

How grooming forms part of the sexual abuse process

Indicators of grooming

How tennis venues can deter grooming

What do you think grooming is?

Use the chat box to feedback your thoughts.

Grooming is an exploitative process which acts as preparation for sexual abuse or sexual exploitation.

Grooming develops an emotional connection with a child and helps to:

- Gain the child's trust
- Creates opportunities to abuse
- Reduces the risk of detection
- Increases vulnerability of child
- Increases the child's compliance



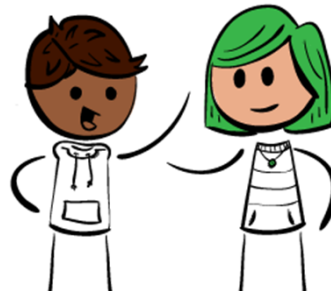
True or false

Use the chat box to say if you think the following statements are true or false, and the reasons why.

“Only children are subject to grooming”



“There must be face to face contact for grooming to happen”



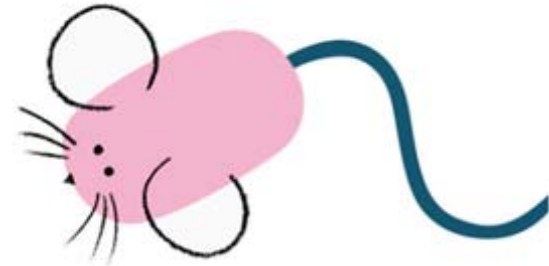
Online grooming

Social media offers potential abusers:

- Access to a lot of children
- Anonymity
- Ability to develop relationships more quickly
- Relatively safe opportunities to develop trust

It can involve:

- Inappropriate online behaviour
- Indecent media
- Arranging to meet children off-line



Grooming as an offence

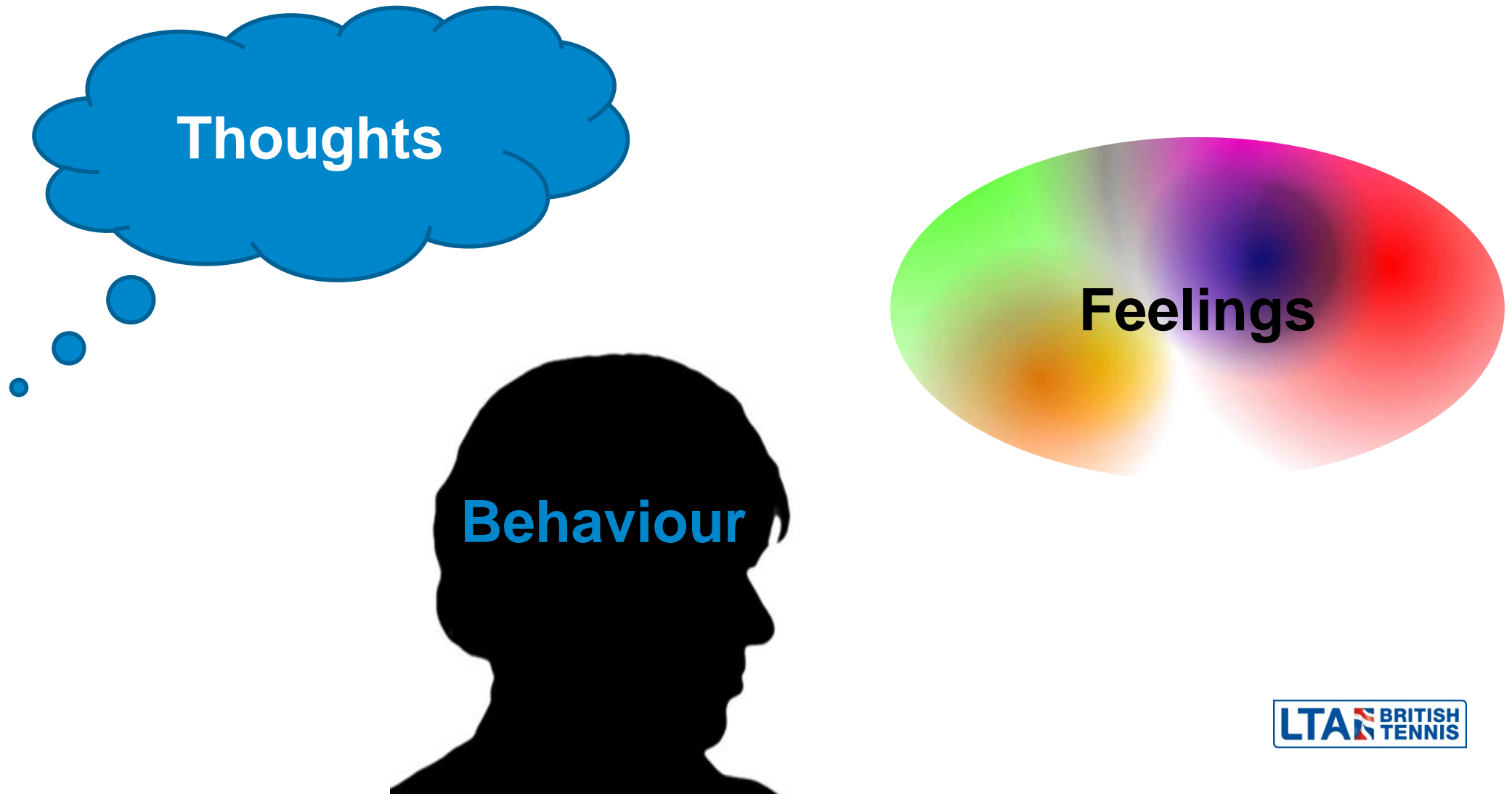
Sexual Offences Act 2003

- Criminal offence to befriend a child in person or online and meet or intend to meet with the intention of abusing them
- Maximum sentence is 10 years imprisonment
- Legal restrictions can be put in place to prohibit adult from engaging in inappropriate behaviours with children on-line



How grooming forms part of the sexual abuse process

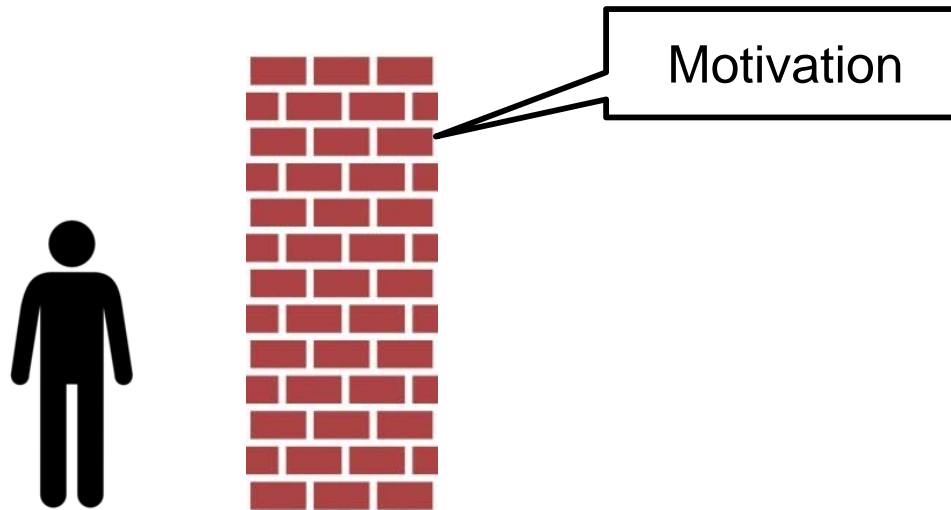
Grooming is a cycle of...



Four stages to sexual abuse – David Finkelhor

1. Motivation (*thoughts and feelings*)

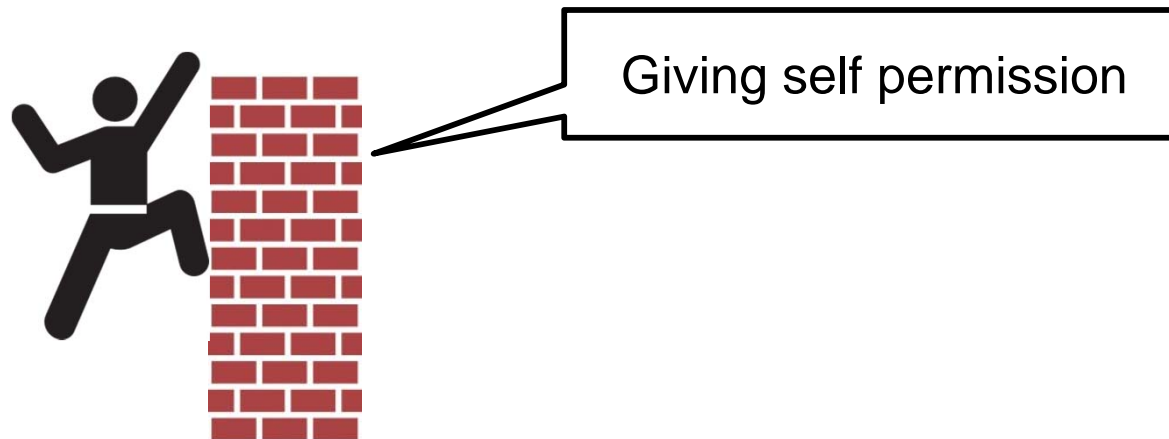
- Strong urges or desires
- Thinking about or wanting to do something sexual
- Reinforced by fantasies and masturbation



Four stages to sexual abuse – David Finkelhor

2. Giving self permission (*thoughts and feelings*)

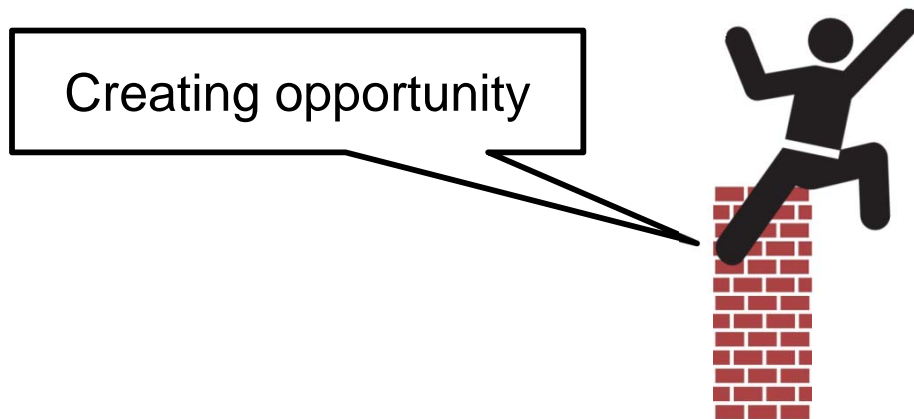
- Giving in to the urge/desire
- Fantasising
- Making excuses
- Justifying and rationalising
- Overcoming conscience
- Overcoming guilt and fear of detection



Four stages to sexual abuse – David Finkelhor

3. Creating the opportunity (*behaviours*)

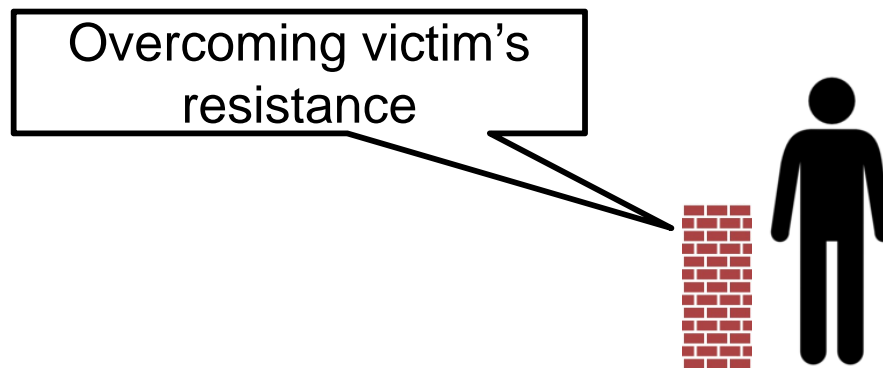
- How to go about engaging in the behaviour
- Grooming the victim, adults and organisation
- Gaining access to a victim
- Creating an environment where abuse can take place



Four stages to sexual abuse – David Finkelhor

4. Overcoming victim's resistance (*behaviours*)

- Getting the victim to be compliant (grooming)
 - Threatening
 - Bribing
 - Treats
 - Force
 - Tricking



Grooming scenario

Watch the video and use the chat box to feedback indicators of ways you think the coach groomed:

- The player
- The carer
- The club



Indicators of grooming

The player:

- Social vulnerability/low self esteem
- Desire to excel at something
- Special friend/'Father' figure
- Isolating activities/messages
- Gifts/secrets
- Social media
- One to one coaching/contact
- Lifts to/from sessions

The carer:

- Developed relationship with carer
- Assumed a wider role than just coaching – almost a parental role
- Befriending
- Secured carer's permission/support for gift-giving and practical support
- Carer values contribution coach makes to player's esteem etc

The club:

- More powerful position
- Indispensable to the running of the club
- Embedded in their personal and club history
- Use of formal name
- Veiled threats re impact of false allegations
- Dependence on coach for club's future
- Reflecting family's acceptance
- Prickly response to challenge



What type of environments can encourage grooming?

Use the chat box to feedback what type of environments you think could encourage grooming.

complacency – ‘it would never happen here’

power, influence and control vested in one person

low awareness of or commitment to safeguarding

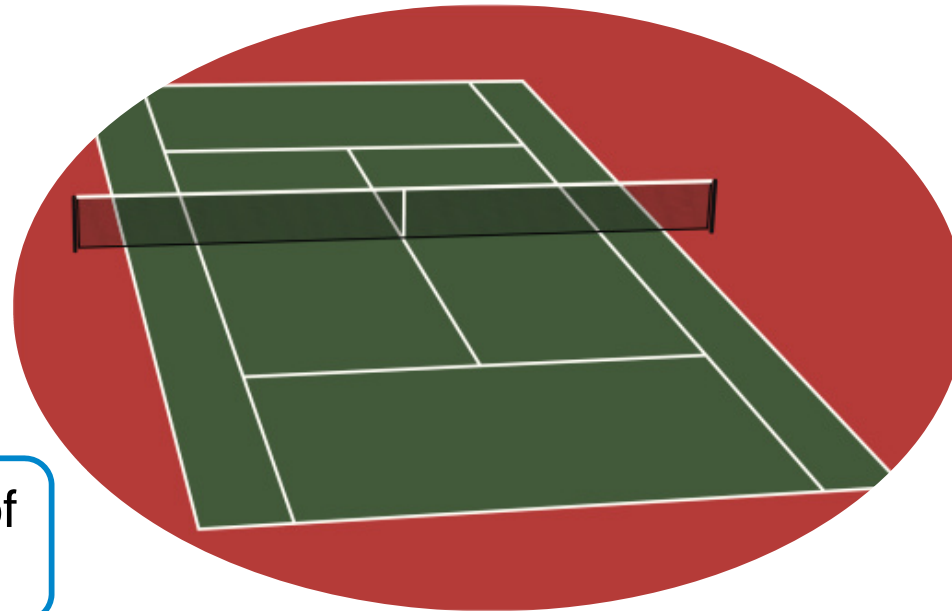
culture of dependence on one individual for safeguarding

absence or ignorance of clear codes of conduct

children’s voices are not heard

hierarchical power restricts challenge

absence of clear ways to raise or discuss concerns



How can venues deter grooming?

Use the chat box to feedback your ideas.

- ✓ Establish and promote clear codes of conduct
- ✓ Have robust safeguarding policy
- ✓ Have clear procedures in place at your venue, e.g. transport, communication, supervision (ratios), complaints, disciplinary, management of volunteers/staff.
- ✓ Encourage child focused and open environments where concerns can be raised
- ✓ Have clear processes for reporting concerns and ensure all members are aware of this
- ✓ Safeguarding training for key staff and volunteers
- ✓ Follow safe recruitment processes

Resources and support

www.lta.org.uk/safeguarding

www.nspcc.org.uk

www.staysafeonline.org

Thank you for attending!

Contact us

safeandinclusive@lta.org.uk

0208 487 7000

