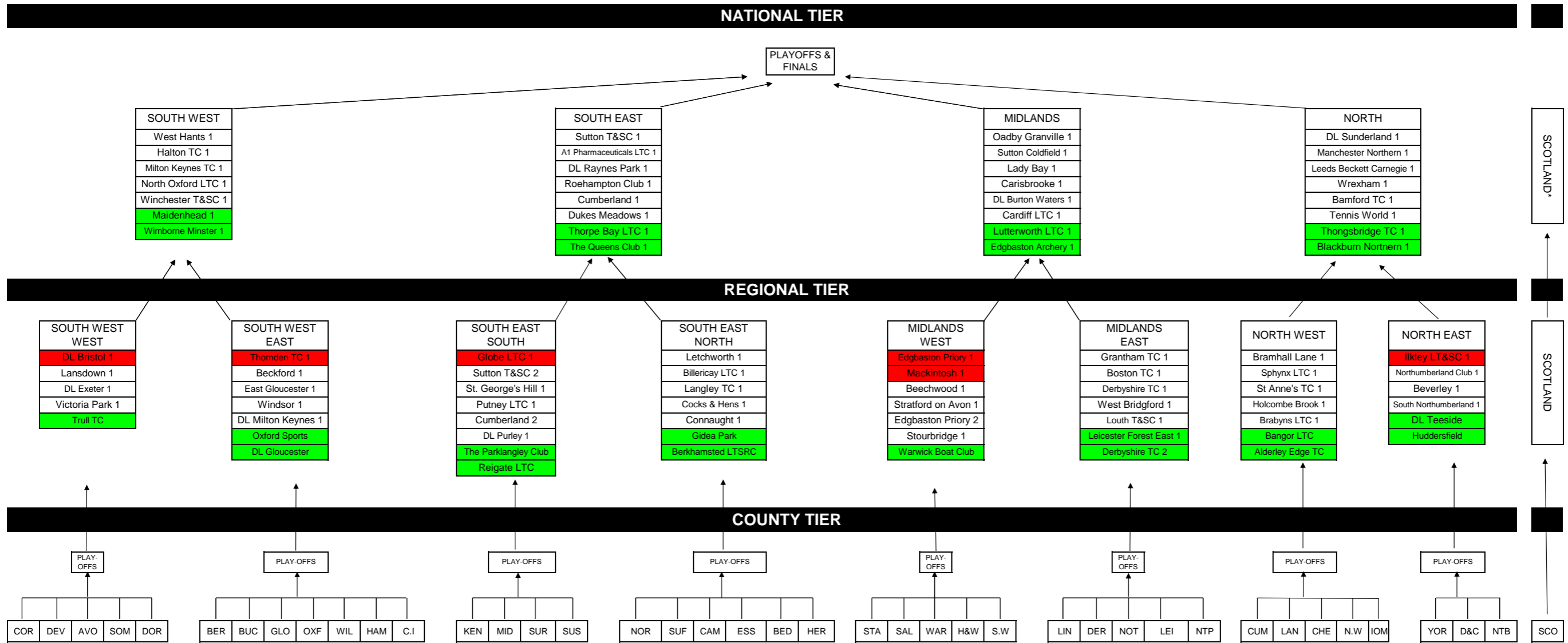


LTA TEAM TENNIS OPEN MEN'S STRUCTURE 2019



Open Structure User Guide

The teams in red below have been relegated to the County tier for the 2019 season.

*The winners from Team Tennis Scotland will play at home to 3rd place in England/Wales North. The winner qualifies for the National Open Playoffs

Green = Promoted Team

Red = Relegated Team

Heron Newquay 1

Salisbury 1
Great Missenden 1

A1 Pharmaceuticals LTC 2
Bromley LTC 1

Harlow LTC 1
Cambridge LTC 1

DL Dudley 1
Walmley TC 1

Kibworth 1
Leicestershire LTC 1

Hale LTC 1

DL Leeds 1
Sunderland TC 1