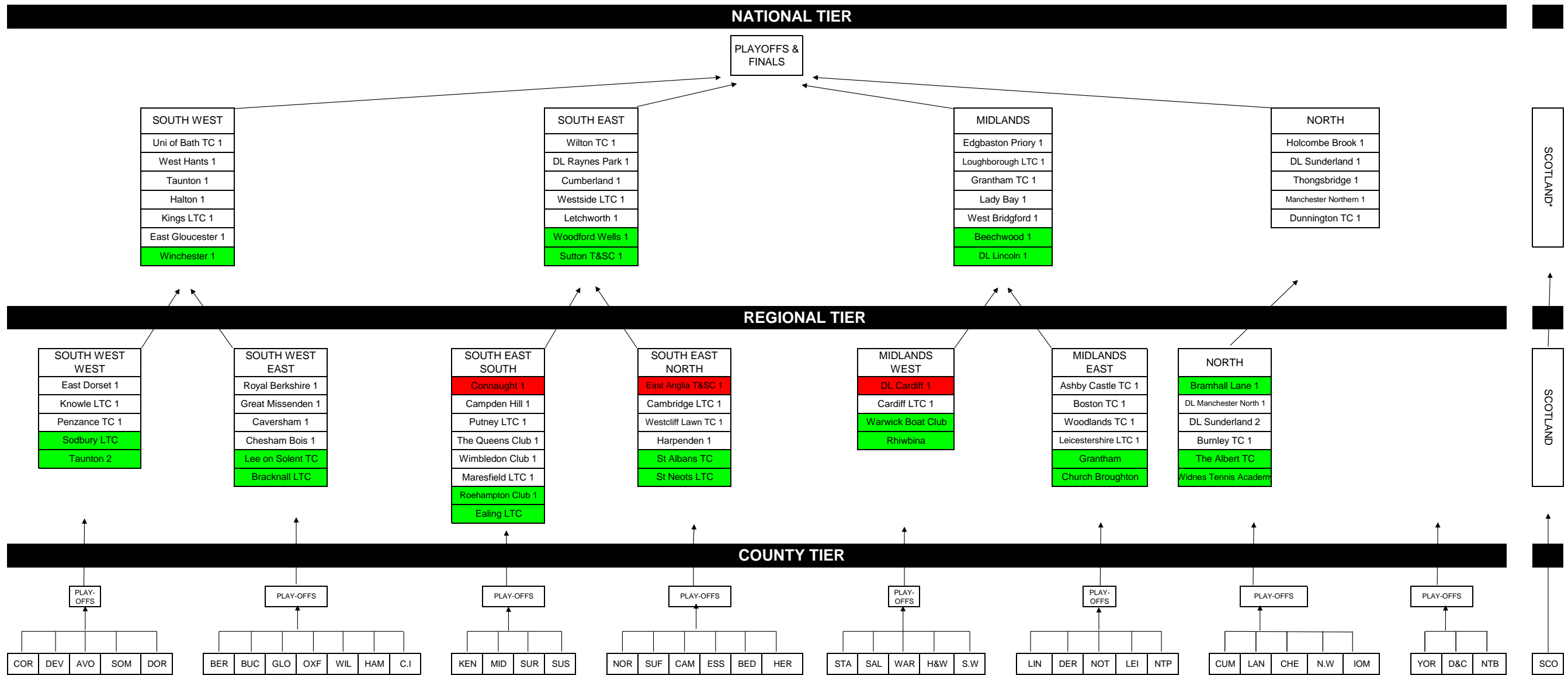


LTA TEAM TENNIS OPEN WOMEN'S STRUCTURE 2019



Open Structure User Guide

The teams in red below have been relegated to the County tier for the 2019 season.

*The winners from Team Tennis Scotland will play at home to 3rd place in England/Wales North. The winner qualifies for the National Open Playoffs

Green = Promoted Team

Red = Relegated Team

Bath LTC 1

Devizes LTC 1

DL Purley 1
 Sevenoaks LTC 1

Berkhamsted 1
 Towers H&RC 1

Leamington 1

Charnwood LTC 1

DL Cheadle 1